

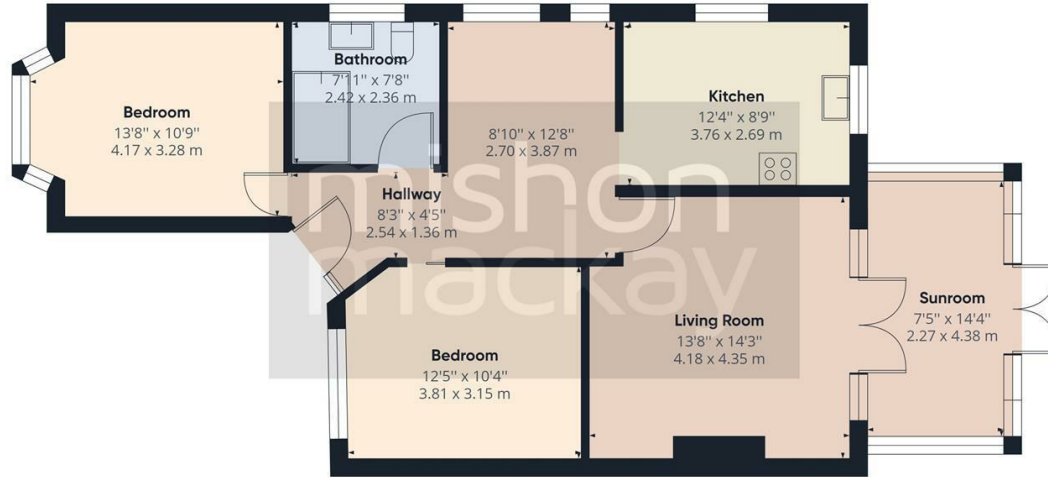


Fonthill Road, Hove, BN3 6HD

£2,250 PCM -

mishonmackay
Lettings





Approximate total area⁽¹⁾
913.69 ft²
84.88 m²

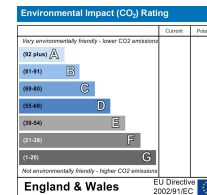
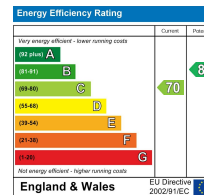
(1) Excluding balconies and terraces

While every attempt has been made to ensure accuracy, all measurements are approximate, not to scale. This floor plan is for illustrative purposes only.

GIRAFFE360

Train Station: Hove 0.3 miles
Council Tax: D

These property details are set out as a general outline only and do not constitute any part of an Offer or Contract. Any services, equipment, fittings or central heating systems have not been tested and no warranty is given or implied that these are in working order. Buyers are advised to obtain verification from their solicitor or surveyor. Fixtures, fittings and other items are not included unless specially described. All measurements, distances and areas are approximate and for guidance only. Room measurements are taken to be the nearest 10 cm and prospective buyers are advised to check these for any particular purpose, e.g. Fitted carpets and furniture. This material is protected by the laws of copyright. The owner of the copyright is Mishon Mackay Estate Agents. This property sheet forms part of our database rights and copyright laws. No unauthorised copying or distribution without permission.



Two bedroom bungalow in a central Hove location moments from Hove Park. Offered to let part furnished. Available 1st September 2023.

Beautiful and immaculately presented semi-detached bungalow set in this extremely central location close to Hove Park, Hove mainline railway station and sought after local schools, making this area extremely popular with commuters and families alike.

The property is in stunning order throughout, as well as having a wonderful flow.

The bungalow is arranged with an entrance vestibule leading to the reception hallway, opening to a very comfortable dining area. At the rear of the property is a living room that leads through to the conservatory, which in turn overlooks the beautifully maintained west facing rear garden.

Off the main reception hallway is access to a good size and modern kitchen, as well as two double bedrooms and a bathroom.

At the rear is a beautiful west facing garden which is laid to lawn with mature flower and shrub borders. There is off road parking to the front for one vehicle, as well as having a shared driveway leading to the garage at the rear.

This lovely property is offered to let part furnished and being available to move into on 1st September.