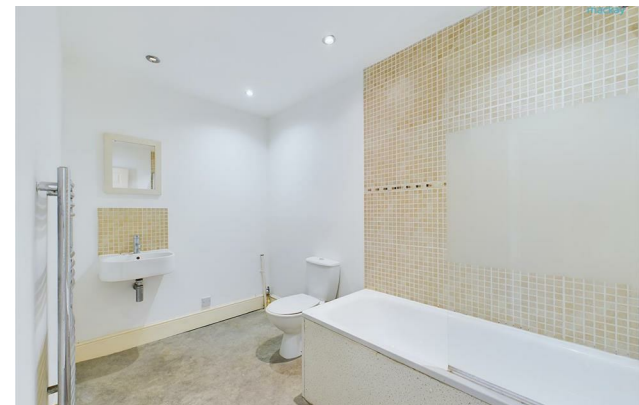




mishon
mackay



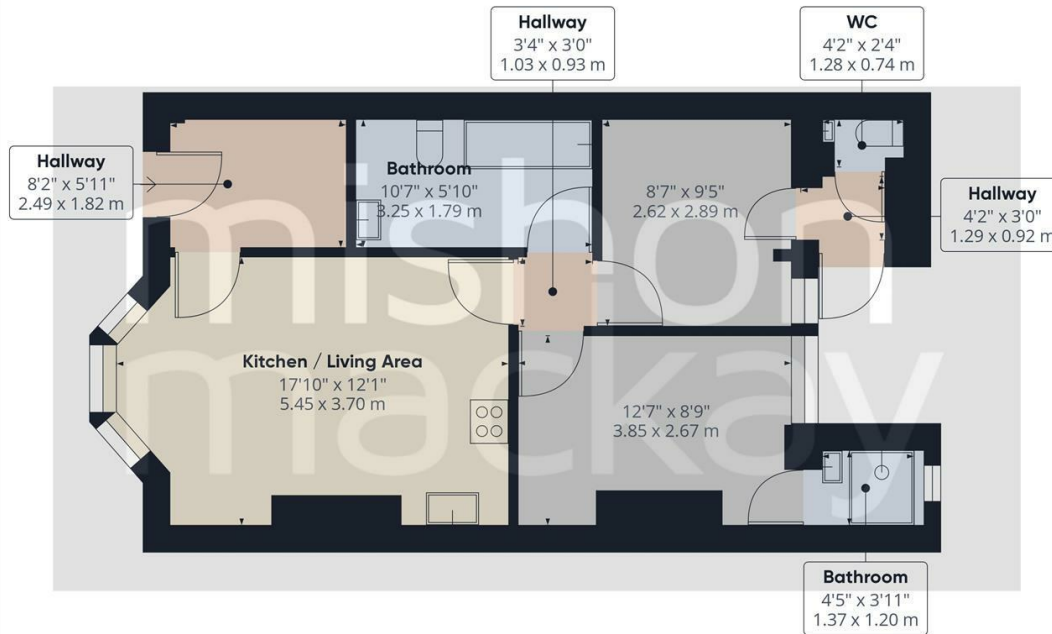
Old Shoreham Road, Brighton, BN1 5DD

£1,300 PCM -

mishonmackay
Lettings



Two bedroom apartment, with small courtyard area, close to Brighton station and shops, pubs and food eateries on London Road. Offered to let un-furnished. Available now!



Approximate total area¹
560.19 ft²
52.04 m²

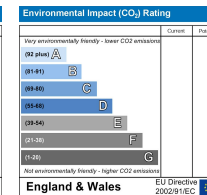
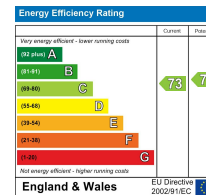
Excluding balconies and terraces

While every attempt has been made to ensure accuracy, all measurements are approximate, not to scale. This floor plan is for illustrative purposes only.

GIRAFFE360

Train Station: Brighton 0.5 miles
Council Tax: A

These property details are set out as a general outline only and do not constitute any part of an Offer or Contract. Any services, equipment, fittings or central heating systems have not been tested and no warranty is given or implied that these are in working order. Buyers are advised to obtain verification from their solicitor or surveyor. Fixtures, fittings and other items are not included unless specially described. All measurements, distances and areas are approximate and for guidance only. Room measurements are taken to be the nearest 10 cm and prospective buyers are advised to check these for any particular purpose, e.g. Fitted carpets and furniture. This material is protected by the laws of copyright. The owner of the copyright is Mishon Mackay Estate Agents. This property sheet forms part of our database rights and copyright laws. No unauthorised copying or distribution without permission.



This two bedroom flat, with own street entrance, is in a period building close to Brighton mainline train station and a selection of shops, pubs and food eateries on hand nearby on London Road.

On entering the property there is a useful entrance hall, which could be used as an office area.

The open plan living/kitchen area is to the front of the property with double glazed bay windows injecting lots of natural light into the room.

Both bedrooms are at the rear with the main bedroom having an en-suite shower room. The second bedroom has access out into the courtyard area.

Finally, to finish off inside is the large bathroom with panelled bath with shower over, wash hand basin, WC, heated towel rail and plumbing for a washing machine.

This lovely property is offered to let un-furnished and is available to move into now.

Please note this tenancy is six months to begin with, our landlord would like sales viewings to commence at agreed times on a Wednesday and Saturday from the beginning of the tenancy.